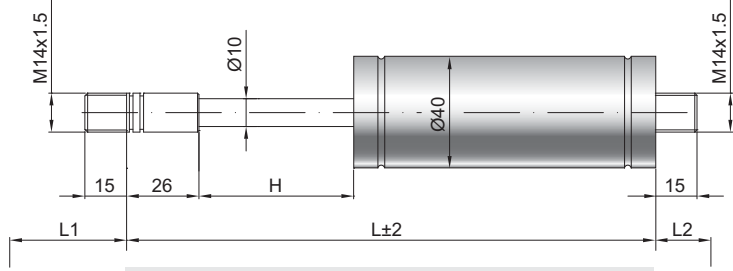


# Tension spring Z 10-40

**Tension force F1** 200 - 2000 Newton  
**Progression** 40 %  
**Piston rod** Ø 10 mm, steel chromium plated  
**Cylinder** Ø 40 mm, steel black spray coated  
**Threads** Steel zinc plated

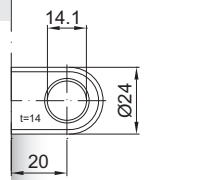
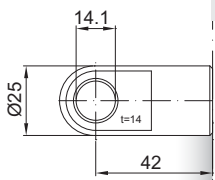
GZ 15

GZ 15



AU 42

AZ 20



### Details

**Standard strokes H (mm)**  
 10, 40, 50, 60, 70, 90, 100, 110, 120,  
 140, 150, 170, 190, 200, 210, 240, 250,  
 290, 340, 350, 390, 440, 490, 590

**Standard length GL**  
 $L = 2 \times H + 150$   
 $GL = L + L1 + L2$

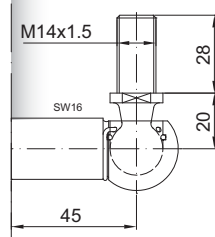
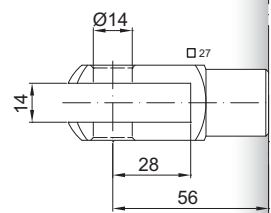
**Standard including**  
 Valve on piston rod end

**Extras**  
 4 - Grease chamber  
 6 - Protection tube  
 B3 - Sealing system  
 NT - Low-temperature design  
 HT - High-temperature design

Nur am Zylinder möglich

GA 56

WG 45



AG 57

