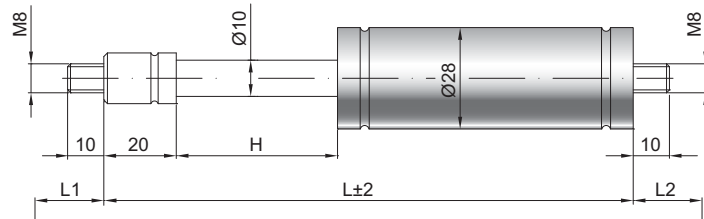


# Tension spring Z 10-28

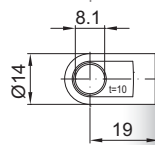
<b>Tension force F1</b>	150 - 1200 Newton
<b>Progression</b>	20 %
<b>Piston rod</b>	Ø 10 mm, steel chromium plated
<b>Cylinder</b>	Ø 28 mm, steel black spray coated
<b>Threads</b>	Steel zinc plated

GZ 10



GZ 10

AU 19



### Details

#### Standard strokes H (mm)

20, 50, 60, 70, 80, 100, 110, 120, 130, 150, 160, 180, 200, 210, 220, 250, 260, 300, 350, 360, 400, 450, 500, 600

#### Standard length GL

$L = 2 \times H + 100$   
 $GL = L + L1 + L2$

#### Standard including

Valve on piston rod end

#### Extras

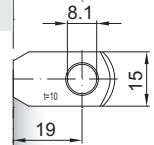
- 4 - Grease chamber
- 6 - Protection tube
- B3 - Sealing system
- NT - Low-temperature design
- HT - High-temperature design

Gewindezapfen auch mit M10 lieferbar

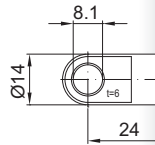
More **threads** can be found here ▶

**Matching brackets** can be found here ▶

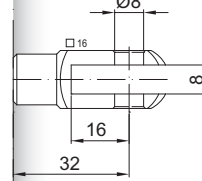
AR 19



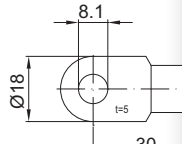
AS 24



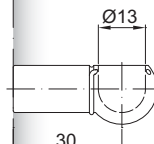
GA 32



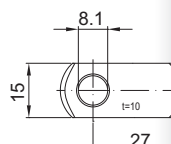
AS 30



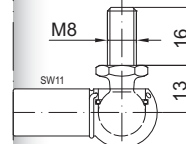
PF 30



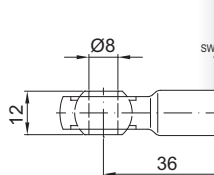
AR 27



WG 30



AG 36



WX 30

