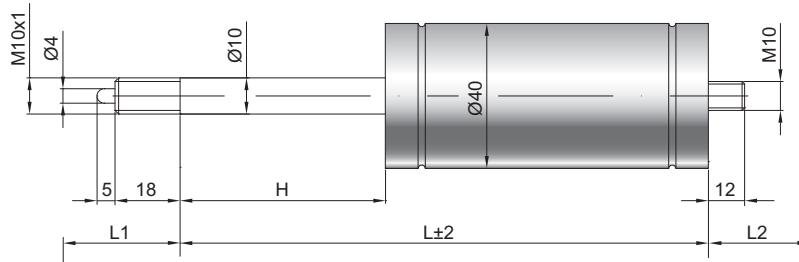


Starr blockierbare Gasdruckfeder S 10-40

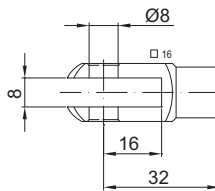
Ausschubkraft F1	250 - 1200 Newton
Progression	33 %
Kolbenstange	Ø 10 mm, Stahl hartverchromt
Druckrohr	Ø 40 mm, Stahl schwarz lackiert
Anschlüsse	Stahl blau verzinkt

GZ 18



GZ 12

GX 32



Details

Standardhöhe H (mm)

10, 15, 20, 25, 30, 40, 50, 55, 60, 70, 80, 90, 100, 110, 120, 125, 130, 140, 150, 155, 170, 190, 200, 210, 220, 230, 290, 340, 390, 440, 490

Standardlänge GL

$L = 2,2 \times H + 100$
 $GL = L + L1 + L2$

Auslösung

Auslösestift 5 mm überstehend
 Auslöseweg 2 - 4 mm
 Blockierkraft: Druck ~ 12 x F1
 Zug max. 3000 N

Technische Vorschrift beachten ▶

Standardlieferungsumfang

Ventil am Bodenstück

Extras

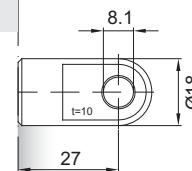
- 3 - Kolbenstangenabdichtung
- 4 - Fettkammer
- 5 - Ventil
- 6 - Schutzrohr

Weitere **Anschlüsse** finden Sie hier ▶

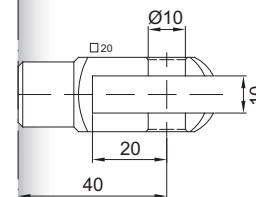
Passende **Beschläge** finden Sie hier ▶



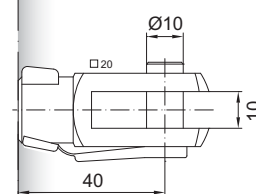
Auslösesysteme
finden Sie hier ▶



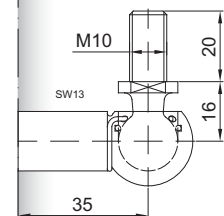
AU 27



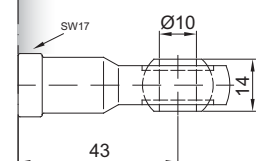
GA 40



GG 40



WG 35



AG 43