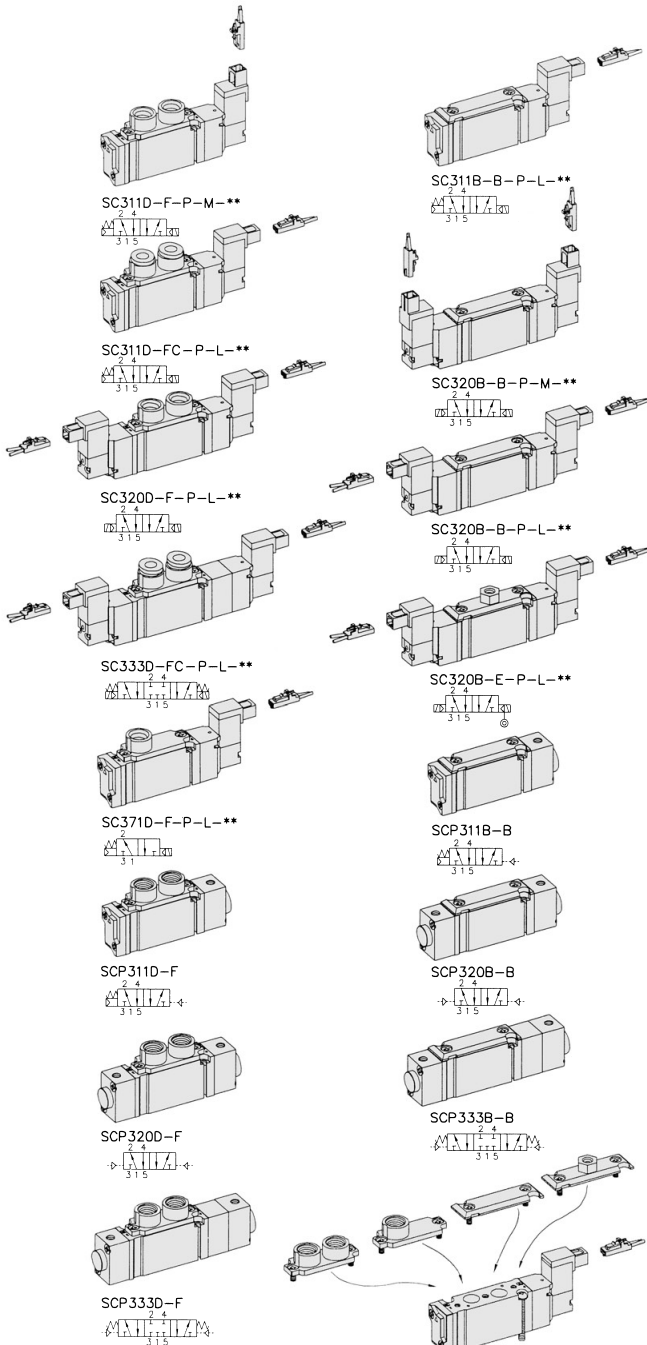


SC300. 1/8

"C" COMPACT Series
Solenoid / Pneumatic Valves

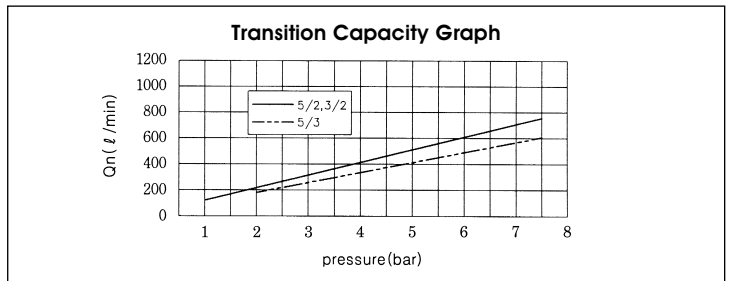
- 5/2, 5/3, 3/2-1/8 ■ 15mm Body Width
- Manifold or Sub-Base Type
- High Efficiency, Space Economy Type
- Transition Flow 500ℓ/min (5bar)



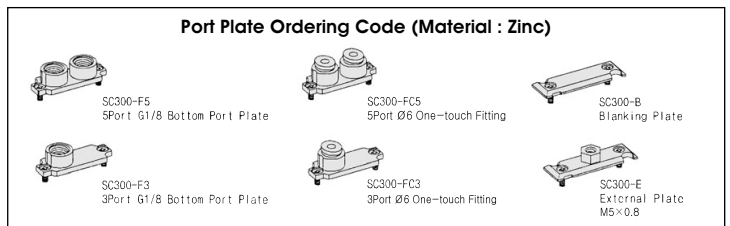
** : Voltage Selection (see page 10)

SPECIFICATION

ITEM	SERIES		SOLENOID, PNEUMATIC	
	FUNCTION		5, 3 Port 2 Position	5 Port 3 Position
Fluids	Compressed Air & Inert Gases			
Pressure(bar)	1.5~7.0		2.0~7.0	
Eff. Sectional Area(mm ²)-5bar	9.0		7.5	
Ambient & Fluid Temp.	5~60°C (41~140°F)			
Response Time(5bar)	25ms or Less		35ms or Less	
Max. Working Frequency	8c/sec		5c/sec	
Lubrication	Not Required(Use ISO VG32 #)			
Manual Override	Push Button(Standard), Lever Lock(Option)			
Coil Insulation Class	F-Class or Equivalent			
Permissible Voltage Variation	±10% of Rated Voltage			
Off Min. Residual Voltage	DC:10% or Less			
Power Consumption(DC)	Holding-DC:1.2W(50mA)			



- ### The Material of Parts
- Valve Body : Die-Cast Aluminium
 - Cap : Zinc Pressure Die-Cast
 - Spool : Aluminium
 - Pilot Parts : Glass Filled Nylon
 - Seals : NBR
 - Armature : Stainless Steel
 - Spring : Stainless
 - Armature Seals : Viton

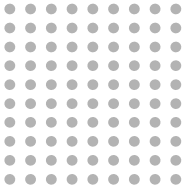


* The specification on each item can be amended without any prenotice to improve a performance.
* The specification on each item can be different from actual specification.

ORDERING NO.

SC3 1 1 D - F - P - L - D4

Valve Series	Function	Return Method	Port Type	Port Plate & Thread	Manual Operator	Solenoid Coil Type	Voltage
SC3 : Solenoid Valve	1	5/2 Single	0 None	D Manifold	F G1/8	0 None	0 None
	2	5/2 Double	1 Air + Spring	B Sub-Base	FN NPT 1/8	L 90 Degree Plug-in Wire Assembly LED	D4 DC 24V
	3	5/3 Closed Center	2 Air		FC Ø6 One-Touch Fitting	M Non-Locking	D2 DC 12V
	4	5/3 Open Center	3 Spring		B Blanking End Plate	L Lever Locking	
SCP3 : Pneumatic Valve	5	5/3 Pressure Center				M 180 Degree Plug-in Wire Assembly LED	
	6	3/2 Normally Closed					
	7	3/2 Normally Open			E External End Plate, Plate M5×0.8		

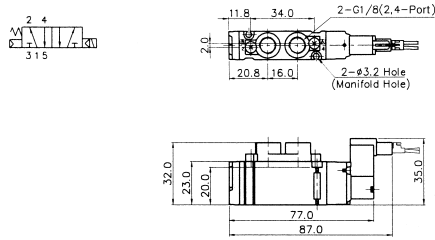


Solenoid & Pilot Actuated Spool Valves

Port Thread 1/8

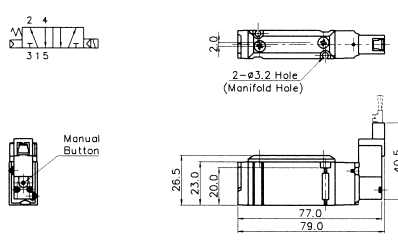
5Port 2Position Solenoid Valve (Manifold)

Single Solenoid
SC311D-F-P-L-***



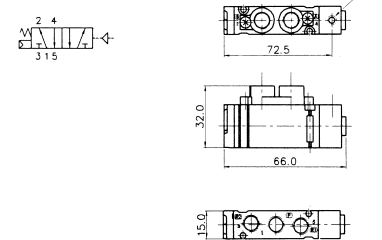
5Port 2Position Solenoid Valve (Sub-Base)

Single Solenoid
SC311B-B-P-M-***



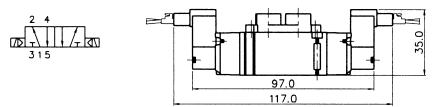
5Port 2Position Pneumatic Valve

Single Pneumatic
SCP311D-F



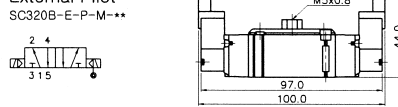
Double Solenoid

SC320D-F-P-L-***

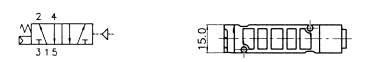


Double Solenoid External Pilot

SC320B-E-P-M-***

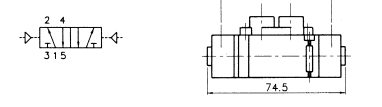


SCP311B-B



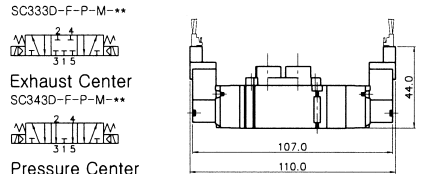
Double Pneumatic

SCP320-F



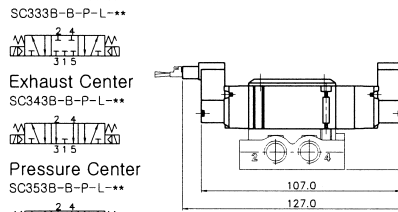
5Port 3Position Solenoid Valve (Manifold)

Closed Center
SC333D-F-P-M-***



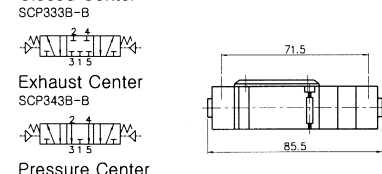
5Port 3Position Solenoid Valve (Sub-Base)

Closed Center
SC333B-B-P-L-***

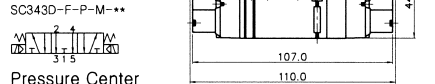


5Port 3Position Pneumatic Valve

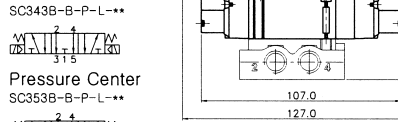
Closed Center
SCP333B-B



Exhaust Center
SC343D-F-P-M-***



Exhaust Center
SC343B-B-P-L-***



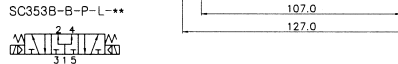
Exhaust Center
SCP343B-B



Pressure Center
SC353D-F-P-M-***



Pressure Center
SC353B-B-P-L-***



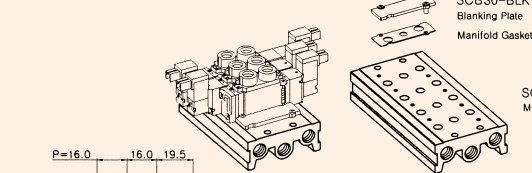
Pressure Center
SCP353B-B



SCB30 SINGLE, DOUBLE MANIFOLD BLOCK

(SC300 Solenoid & Pneumatic Valve Use)

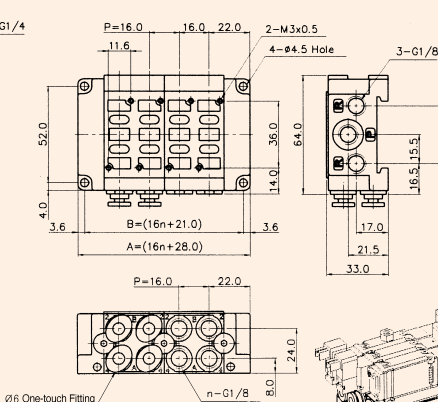
Manifold Block Dimension



Manifold Ordering Code

SCB3 1 - D - M04			
Series	Port & Thread	Function	Manifold Station
SCB3	0 None	0 None	M02 2-Station
SC300 Solenoid Valve	1 G	D Manifold, Port 1/4	M04 4-Station
	2 NPT	S Single Station Sub Base, 1/4 Port Without Pilot Ports	M06 6-Station
		DB Double Modular Sub Base, 1/8 Port Without Pilot Ports	M08 8-Station
		DC6 Double Modular Sub Base, ø6 Fitting	M10 10-Station
		E End Cover, 1/8 Port	
		EB End Blanking Cover	

Double Modular Sub Base Manifold Block Dimension



DOUBLE MODULAR SUB BASE DIMENSION n=STATION

ITEM	n	2	4	6	8	10
B		53.0	85.0	117.0	149.0	181.0
A		60.0	92.0	124.0	156.0	188.0

MANIFOLD BLOCK DIMENSION n=STATION

ITEM	n	2	4	6	8	10
B		40.0	85.0	117.0	149.0	181.0
A		60.0	92.0	124.0	156.0	188.0

Single Station Sub Base Dimension

