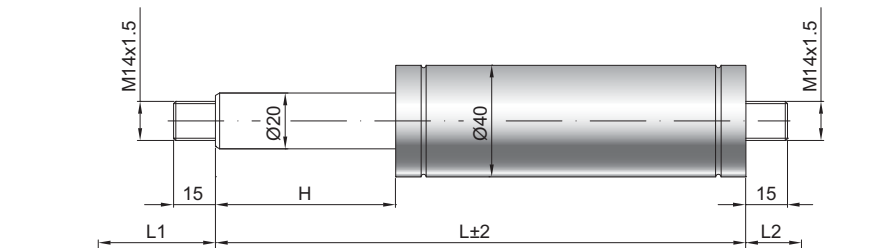


Gas spring G 20-40

Extension force F1	300 - 5000 Newton
Progression	40 %
Piston rod	Ø 20 mm, stainless steel
Cylinder	Ø 40 mm, stainless steel, black spray coated
Threads	Steel zinc plated

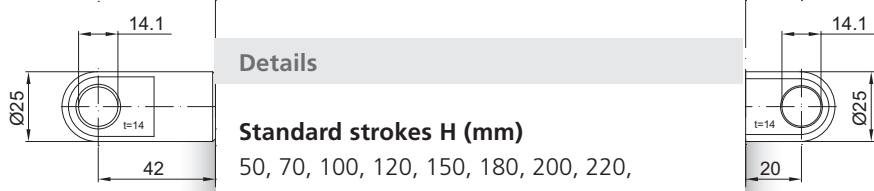
GZ 15

GZ 15



AU 42

AZ 20



Details

Standard strokes H (mm)
 50, 70, 100, 120, 150, 180, 200, 220, 250, 300, 350, 400, 500, 600

Standard length GL
 $L = 2 \times H + 138$
 $GL = L + L1 + L2$

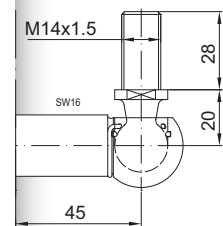
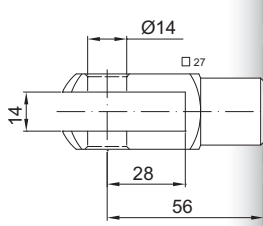
Standard including
 Valve in base plate

- Extras**
- 1 - Wiper ring
 - 2 - Radial valve
 - 4 - Grease chamber
 - 6 - Protection tube
 - 7 - Floating piston
 - B3 - Sealing system
 - NT - Low-temperature design
 - HT - High-temperature design

only possible on cylinder end

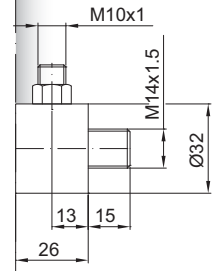
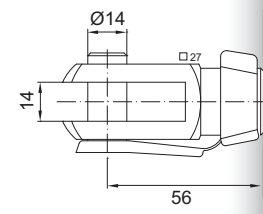
GA 56

WG 45



GG 56

QVGZ



AG 57

