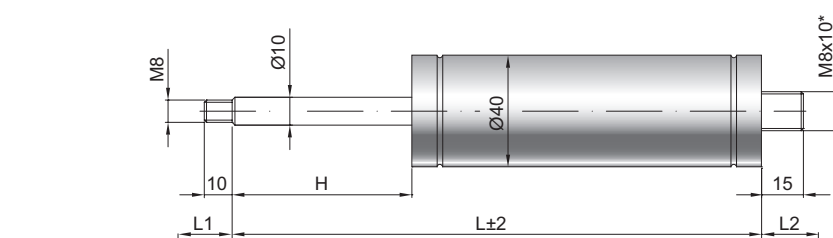


# Gas spring G 10-40

<b>Extension force F1</b>	150 - 1200 Newton
<b>Progression</b>	8 %
<b>Piston rod</b>	Ø 10 mm, stainless steel
<b>Cylinder</b>	Ø 40 mm, stainless steel, black spray coated
<b>Threads</b>	Steel zinc plated

GZ 10

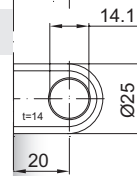
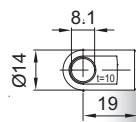
GZ 10



### Details

AU 19

AZ 20

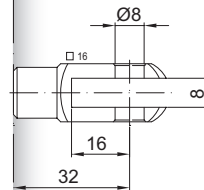
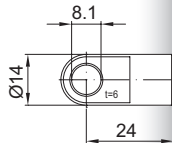


**Standard strokes H (mm)**  
 30, 40, 50, 60, 70, 75, 90, 110, 130,  
 140, 150, 170, 190, 210, 240, 260, 290,  
 315, 340, 390, 440, 500, 600, 700

*only possible on cylinder end*

AS 24

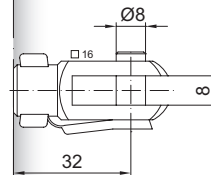
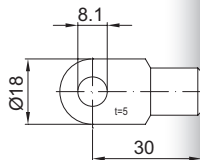
GA 32



**Standard length GL**  
 $L = 2 \times H + 100$   
 $GL = L + L1 + L2$

AS 30

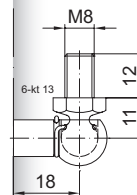
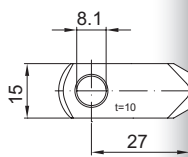
GG 32



**Extras**  
 1 - Wiper ring  
 2 - Radial valve  
 4 - Grease chamber  
 5 - Valve  
 6 - Protection tube  
 7 - Floating piston  
 B3 - Sealing system  
 NT - Low-temperature design  
 HT - High-temperature design

AR 27

WG 18



\*Threaded end optional  
 M8, M10 or M14x1,5

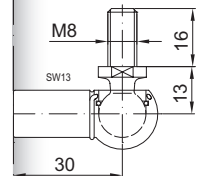
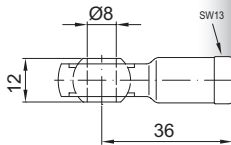
*until max. 800 N*

More **threads** can be found here

Matching **brackets** can be found here

AG 36

WG 30



AG 36

QV GZ

