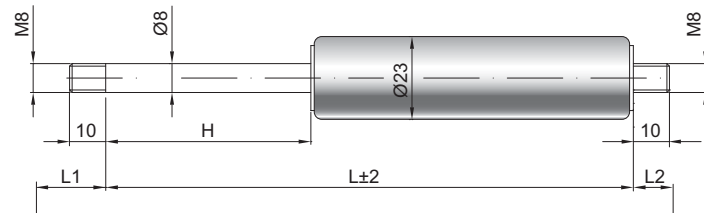


Gas spring G 08-23

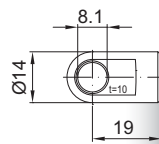
Extension force F1	50 - 700 Newton
Progression	18 %
Piston rod	Ø 8 mm, stainless steel
Cylinder	Ø 23 mm, stainless steel, black spray coated
Threads	Steel zinc plated

GZ 10



GZ 10

AU 19



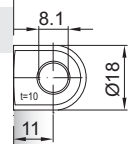
Details

Standard strokes H (mm)
 40, 50, 60, 70, 80, 100, 110, 120,
 140, 150, 160, 180, 200, 220, 250,
 300, 350, 400, 500

Standard length GL
 $L = 2 \times H + 70$
 $GL = L + L1 + L2$

- Extras**
- 1 - Wiper ring
 - 2 - Radial valve
 - 4 - Grease chamber
 - 5 - Valve
 - 6 - Protection tube
 - 7 - Floating piston
 - 8 - Locking device
 - B3 - Sealing system
 - NT - Low-temperature design
 - HT - High-temperature design
 - RK - Friction element

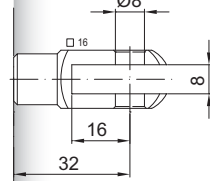
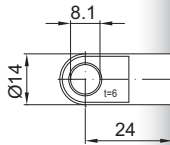
More **threads** can be found here ▶
 Matching **brackets** can be found here ▶



AB 11

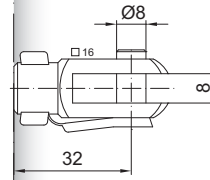
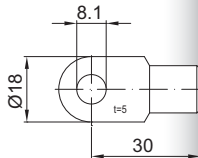
only possible on cylinder end

AS 24



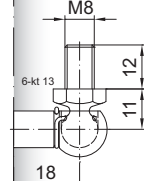
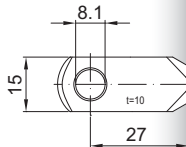
GA 32

AS 30



GG 32

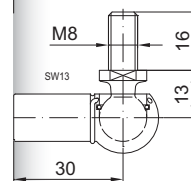
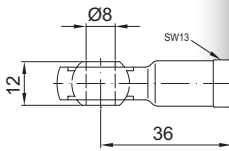
AR 27



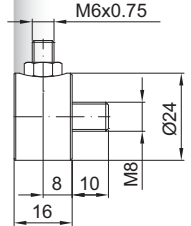
WG 18

until max. 800 N

AG 36



WG 30



QV GZ