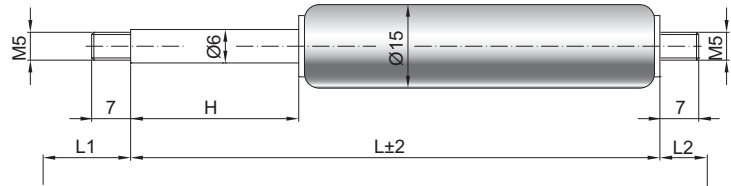


Gas spring G 06-15

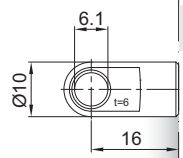
Extension force F1	40 - 400 Newton
Progression	22 %
Piston rod	Ø 6 mm, stainless steel
Cylinder	Ø 15,6 mm, stainless steel, black spray coated
Threads	Steel zinc plated

GZ 07

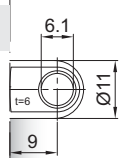


GZ 07

AU 16



Details

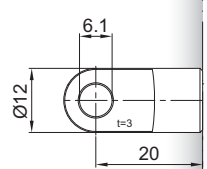


AB 09

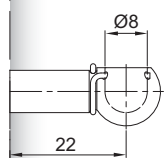
only possible on cylinder end

Standard strokes H (mm)
 20, 30, 40, 50, 60, 70, 80, 100, 110,
 120, 140, 150, 160, 170, 180, 190, 200,
 220, 250, 300

AS 20

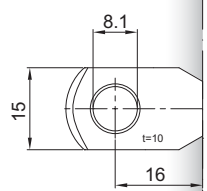


Standard length GL
 $L = 2 \times H + 55$
 $GL = L + L1 + L2$

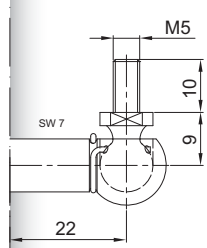


PF 22

AR 16

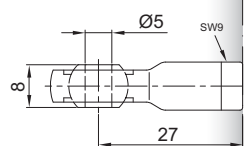


- Extras**
- 4 - Grease chamber
 - 5 - Valve
 - 6 - Protection tube
 - 7 - Floating piston
 - B3 - Sealing system
 - NT - Low-temperature design
 - HT - High-temperature design
 - RK - Friction element

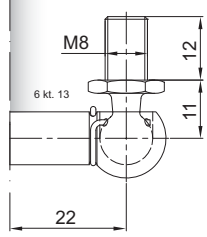


WG 22

AG 27



More **threads** can be found here [▶](#)
 Matching **brackets** can be found here [▶](#)



WX 22

GA 20

