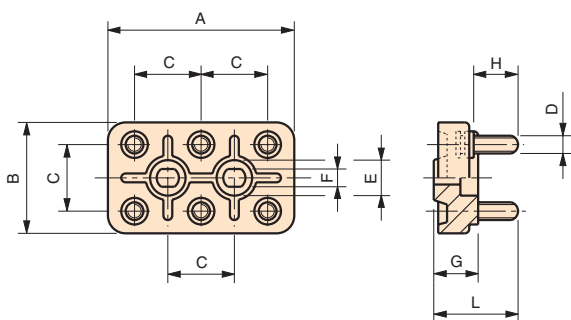


# BAM

## Morsettiere Terminal block

## Bornier



cod.	modello	A	B	C	G	L	D	H	F	E
8100132	<b>BAM/3</b>	40	25	15	12	23	M4	12	4,5	9
8100909	<b>BAM/4/T</b>	50	32	18	12	23	M4	12	4,5	9

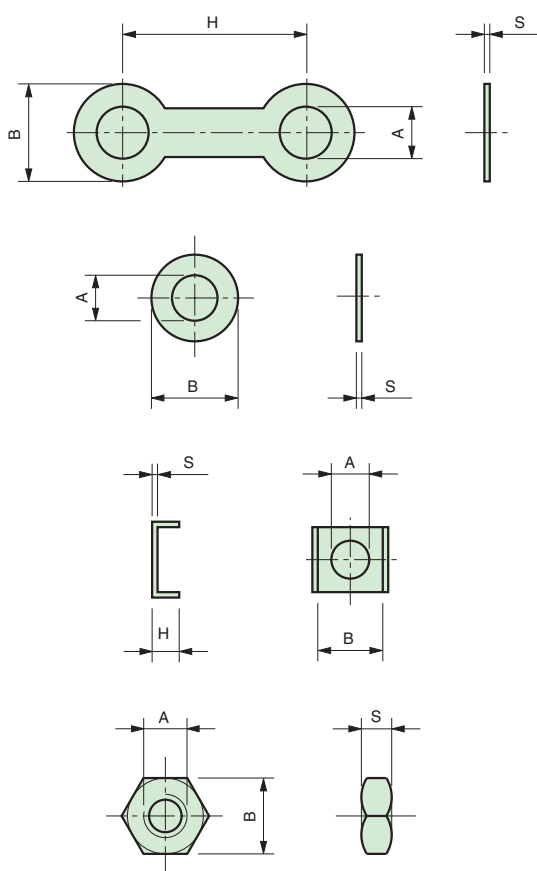
**NOTE:** Si forniscono, per quantità adeguate, anche a 3/4/5 morsetti.  
Morsetti in ottone a base tonda.  
Brass terminals.  
Insert en laiton à base ronde.

**Materiale:** Approvato da U.L. Americana.  
Aminoplastico speciale grigio. Alto potere dielettrico.  
Resistente alle correnti striscianti. Classe di isolamento E.  
Grey melamine plastic, electrical insulation class E.  
Aminoplastique gris spécial. Haut pouvoir diélectrique.  
Classe d'isolation E.

A richiesta vengono prodotte anche in duroplasto nero, caricato con fibre di vetro. Classe di isolamento H.  
Upon request the terminal blocks are produced in black fiber reinforced phenolic plastic. Electrical insulation class H.  
Nous pouvons fournir en duroplast noir renforcé de fibre de verre. Classe d'isolation H.

## Accessori di collegamento Accessories for terminal block

## Accessoires



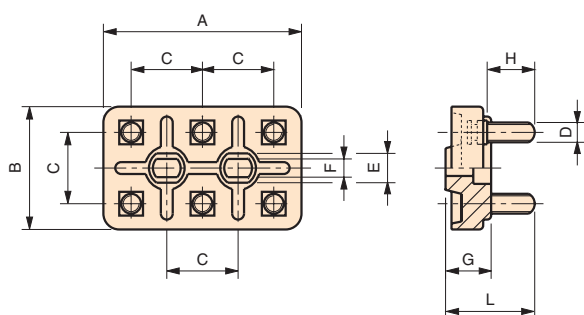
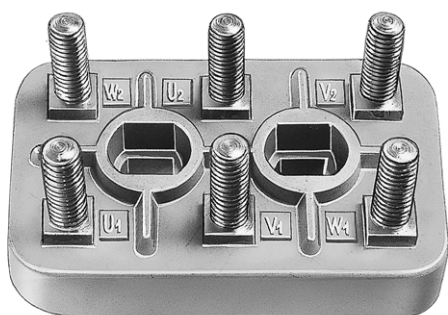
cod.	modello	A	B	S	H			
	<b>BAM/3</b>							
6214025	Rondelle	4,2	8	0,5	–	washers	rondelles	
8800039	Ponti	4,5	7	0,5	15	jumpers	ponts	
6214020	Dadi	<b>DIN 439</b>	M4	7	2,3	–	nuts	écrous
	<b>BAM/4/T</b>							
6214025	Rondelle	4,2	8	0,5	–	washers	rondelles	
6214015	Ponti	4,5	9	0,5	18	jumpers	ponts	
6214020	Dadi	<b>DIN 439</b>	M4	7	2,3	–	nuts	écrous

**Materiale:** Ottone.  
Brass.  
Laiton.

# BAM

## Morsettiere Terminal block

## Bornier



Serie M.E.C.

cod.	modello	A	B	C	G	L	D	H	F	E
6213005	<b>BAM/3</b>	40	25	15	12	20	M3	9	4,5	9
6214005	<b>BAM/4</b>	50	32	18	12	22,5	M4	12	4,5	9
6216005	<b>BAM/5</b>	56	36	20	13	29	M5	15	5,5	10
6217005	<b>BAM/6</b>	70	45	25	16,5	32	M6	17	6,5	11
6218005	<b>BAM/8</b>	96	61	35	20	40	M8	22	9	13,5

**NOTE:** Morsetti in ottone a base quadrata.  
Brass-terminals.  
Insert en laiton à base carrée.

**Materiale:** Approvato da U.L. Americana.

Aminoplastico speciale grigio. Alto potere dielettrico.  
Resistente alle correnti striscianti. Classe di isolamento E.  
Grey melamine plastic, electrical insulation class E.  
Aminoplastique gris spécial. Haut pouvoir diélectrique.  
Classe d'isolation E.

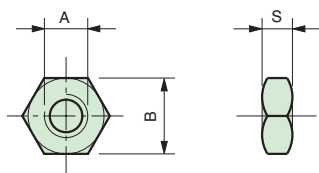
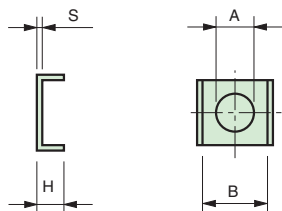
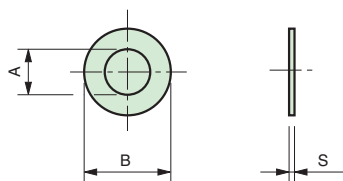
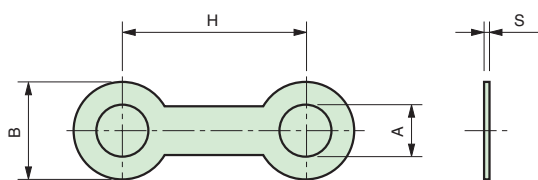
A richiesta vengono prodotte anche in duroplasto nero, caricato con fibre di vetro. Classe di isolamento H.

Upon request the terminal blocks are produced in black fiber reinforced phenolic plastic. Electrical insulation class H.

Nous pouvons fournir en duroplast noir renforcé de fibre de verre. Classe d'isolation H.

## Accessori di collegamento Accessories for terminal block

## Accessoires



Per morsettiere serie M.E.C. (mod. BAM)

cod.	modello	A	B	S	H		
<b>BAM/3</b>							
6213030	Serrafili	3,2	5	0,5	3	terminals	serre-fils
6213025	Rondelle	3,2	7	0,5	-	washers	rondelles
6213015	Ponti	3,4	7	0,5	15	jumpers	ponts
6213020	Dadi	<b>DIN 439</b>	M3	5,5	1,8	nuts	écrous
<b>BAM/4</b>							
6214030	Serrafili	4,2	6	0,5	3	terminals	serre-fils
6214025	Rondelle	4,2	8	0,5	-	washers	rondelles
6214015	Ponti	4,5	9	0,5	18	jumpers	ponts
6214020	Dadi	<b>DIN 439</b>	M4	7	2,3	nuts	écrous
<b>BAM/5</b>							
6216030	Serrafili	5,2	7,2	0,5	3	terminals	serre-fils
6216025	Rondelle	5,5	11	0,5	-	washers	rondelles
6216015	Ponti	5,5	10	0,5	20	jumpers	ponts
6216020	Dadi	<b>DIN 439</b>	M5	8	2,7	nuts	écrous
<b>BAM/6</b>							
6217030	Serrafili	6,2	8,5	0,5	3,5	terminals	serre-fils
6217025	Rondelle	6,2	13	0,5	-	washers	rondelles
6217015	Ponti	6,5	12	1	25	jumpers	ponts
6217020	Dadi	<b>DIN 439</b>	M6	10	3,2	nuts	écrous
<b>BAM/8</b>							
6218025	Rondelle	8,2	16	0,8	-	washers	rondelles
6218015	Ponti	8,2	15	1,5	5	jumpers	ponts
6218020	Dadi	<b>DIN 439</b>	M8	13	4	nuts	écrous

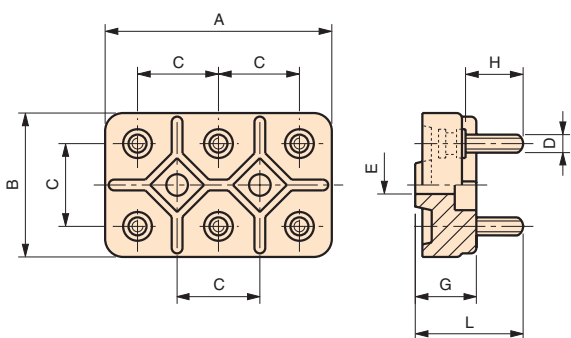
**NOTE:** Ogni morsettiere comprende 6 serrafilo - 6 rondelle - 3 ponti - 12 dadi.  
Each terminal includes 6 washers, 12 nuts, 3 jumpers, 6 terminals.  
Bornier livré complet avec: 6 rondelles - 6 serre-fils - 3 ponts - 12 écrous.

**Materiale:** Ottone.  
Brass.  
Laiton.

# BM

## Morsettiere Terminal block

## Bornier



Serie M.E.C. - Tipo unificato, tabella DIN 46294.  
DIN norm 46294.  
Serie M.E.C. - Type unifié, suivant DIN 46294.

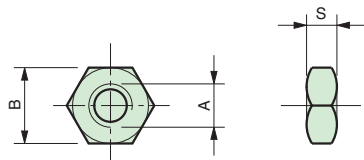
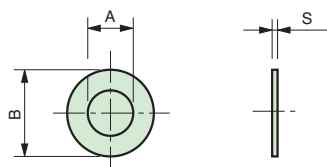
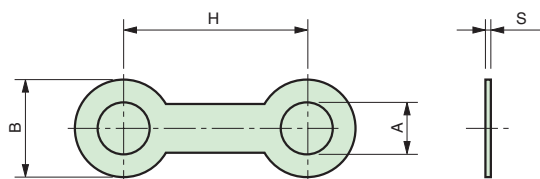
cod.	modello	A	B	C	G	L	D	H	E
6210005	<b>BM/4</b>	54	34	20	15	25	M4	12	6,3
6211005	<b>BM/5</b>	64	40	23	16	30	M5	15	7
6212005	<b>BM/6</b>	78	48	28	20	36	M6	20	7

**NOTE:** Morsetti in ottone a base tonda.  
Brass terminals.  
Insert en laiton à base ronde.

**Materiale:** Resina fenolica con carica minerale, colore fibra. Alto potere dielettrico.  
Classe di isolamento E.  
Brown mineral filled phenolic plastic. Insulation class E.  
Résine phénolique renforcée. Haut pouvoir diélectrique.  
Class d'isolation E.

## Accessori di collegamento Accessories for terminal block

## Accessoires



Per morsettiere serie M.E.C. (mod. BAM)

cod.	modello	A	B	S	H		
<b>BAM/4</b>							
6214025	Rondelle	4,2	8	0,5	–	washers	rondelles
6214015	Ponti	4,8	9	0,5	20	jumpers	ponts
6214020	Dadi	<b>DIN 439</b>	M4	7	2,3	nuts	écrous
<b>BAM/5</b>							
6216025	Rondelle	5,5	11	0,5	–	washers	rondelles
6211015	Ponti	5,8	11	0,8	23	jumpers	ponts
6216020	Dadi	<b>DIN 439</b>	M5	8	2,7	nuts	écrous
<b>BAM/6</b>							
6217025	Rondelle	6,2	13	0,5	–	washers	rondelles
6212015	Ponti	7	13	1	28	jumpers	ponts
6217020	Dadi	<b>DIN 439</b>	M6	10	3,2	nuts	écrous

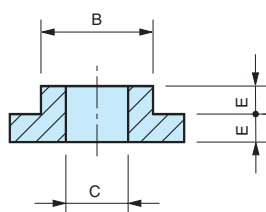
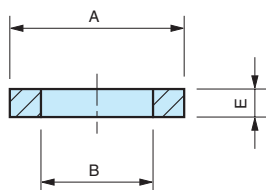
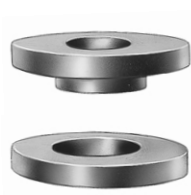
**NOTE:** Ogni morsettiere comprende - 6 rondelle - 3 ponti - 12 dadi.  
Each terminal includes 6 washers, 12 nuts, 3 jumpers.  
Bornier livré complet avec: 6 rondelles - 3 ponts - 12 écrous.

**Materiale:** Ottone.  
Brass.  
Laiton.

# RO

## Coppia rondelle isolanti Insulating washers

## Couple de rondelles isolantes



cod.	modello	A	B	C	E
6318005	RO/1	28	18	∅ 8	4,5
6318010	RO/1	28	18	∅10	4,5
6318015	RO/2	35	18	∅12,5	4,5

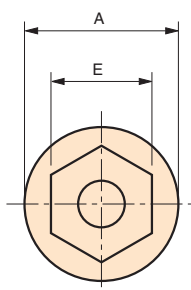
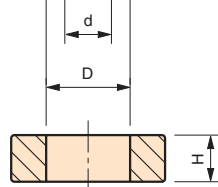
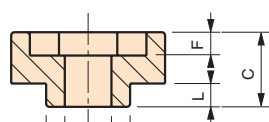
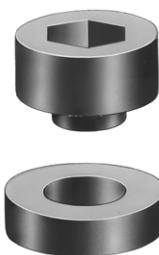
**NOTE:** Disponibili a magazzino nei colori nero e rosso.

**Materiale:** Tecnopolimero.  
Black or red thermoplastic.  
Technopolymère.

# RO

## Coppia rondelle isolanti Insulating washers

## Couple de rondelles isolantes



cod.	modello	A	d	E	D	H	F	L	C
6219005	RO/3	20	6,5	10,5	10,5	5	3	4	12,5
6219010	RO/4	32	8	14,5	18	11	3	5	16
6219015	RO/4	32	10	17,5	18	11	3	5	16
6219020	RO/4	32	12	19,5	18	11	3	5	16

**NOTE:** Disponibili a magazzino nei colori nero e rosso.

**Materiale:** Duroplasto.  
Black or red phenolic plastic.  
Duroplast.

# M

## Morsetto serrafilo Terminal

## Borne serre-fil

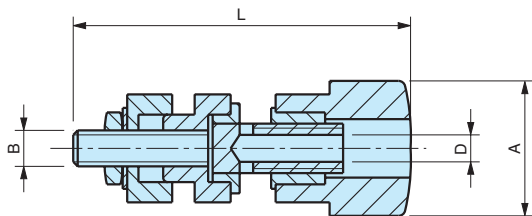


Corpo in ottone nichelato.  
Nickel plated brass stud.  
Corps en laiton nickelé.

cod.	modello	A	L	D	B	colore	colour	couleur
6319005	M/43	15	43	Ø4	M4	Nero	Black	Noir
6319010	M/43	15	43	Ø4	M4	Rosso	Red	Rouge

**NOTE:** Disponibili a magazzino nei colori nero e rosso.

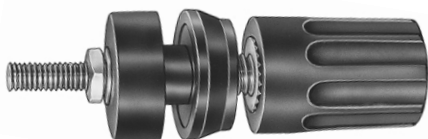
**Materiale:** Tecnopolimero.  
Black or red thermoplastic.  
Technopolymère.



# M

## Morsetto serrafilo Terminal

## Borne serre-fil

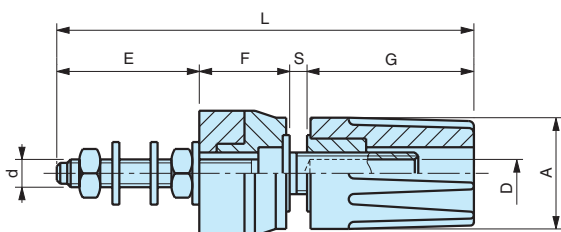


Corpo in ottone nichelato.  
Nickel plated brass stud.  
Corps en laiton nickelé.

cod.	modello	A	D	d	E	F	S	G	L	colore	colour	couleur
6319015	M/59	16	Ø4	M4	19	13	2,5	24,5	59	Nero	Black	Noir
6319020	M/59	16	Ø4	M4	19	13	2,5	24,5	59	Rosso	Red	Rouge

**NOTE:** Disponibili a magazzino nei colori nero e rosso.

**Materiale:** Tecnopolimero.  
Black or red thermoplastic.  
Technopolymère.



# VMS

## Morsetto serrafilo Terminal

## Borne serre-fil

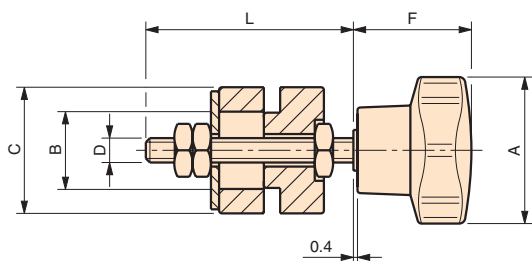


Corpo in ferro zincato.  
Zinc plated steel stud.  
Corps en acier zingué.

cod.	modello	A	B	C	D	F	L	colore	colour	couleur
6220005	VMS/20	20	11	20	M 6	16	47	Nero	Black	Noir
6220010	VMS/20	20	11	20	M 6	16	47	Rosso	Red	Rouge
6220015	VMS/40	40	18	32	M 8	28	50	Nero	Black	Noir
6220020	VMS/40	40	18	32	M 8	28	50	Rosso	Red	Rouge
6220025	VMS/40	40	18	32	M 10	28	50	Nero	Black	Noir
6220030	VMS/40	40	18	32	M 10	28	50	Rosso	Red	Rouge
6220035	VMS/50	50	18	32	M 12	32	50	Nero	Black	Noir
6220040	VMS/50	50	18	32	M 12	32	50	Rosso	Red	Rouge

**NOTE:** Sono formati dal volantino a sei lobi con bussola sporgente e dalle coppie rondelle in duroplasto.  
Sono disponibili a magazzino in colore nero.

**Materiale:** Duroplasto.  
Black or red phenolic plastic.  
Duroplast.



# PR

## Passacavo Cable lock

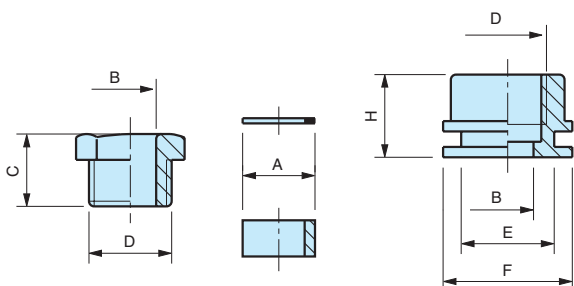
## Passe cloison



cod.	modello	B	D	C	A	H	E	F
6317005	PR/1	12	3/8" gas	14	15	16	20	27

**NOTE:** Si forniscono, per quantità adeguate, in colori diversi.

**Materiale:** Tecnopolimero nero.  
Black thermoplastic.  
Technopolymère noir.



## Salvaspigo per imballaggio Corner-protector for packing

## Protection d'angle pour emballage



cod.	modello	A	B	C
6326005	Salvaspigo	45	52	20

**Materiale:** Tecnopolimero nero.  
Black thermoplastic.  
Technopolymère noir.

